

SAILING INSTRUCTIONS



Incorporating:

- **2.4mR Australian Para Sailing Championships & Victorian State Championships**
- **Finn Victorian State Championships**

Organising Authority: Royal Brighton Yacht Club on behalf of Australian Sailing

With support from Victorian partner clubs:

Black Rock Yacht Club (BRYC), Mordialloc Sailing Club (MSC)

Royal Yacht Club of Victoria (RYCV) and Royal Melbourne Yacht Squadron (RMYS),

1 CHANGES TO SAILING INSTRUCTIONS

- 1.1 Any change to the sailing instructions will be posted before 0900 on the day it will take effect, except that any changes to the format or schedule of races will be posted on the [Official Notice Board](#) (ONB) by 2000 on the day before it will take effect.
- 1.2 Any reassignment of classes to course areas will be posted before 0900 on the day it will take effect, or if flag AP is displayed ashore, 30 minutes before flag AP for that class is removed.
- 1.3 When any SI Addendum is changed, an updated version of it will be posted on the Official Notice Board.

2 COMMUNICATIONS WITH COMPETITORS

- 2.1 The [Official Notice Board](#) will be an online notice board located at www.sailmelbourne.com.au. All protests, scoring enquiries, equipment and crew change requests shall be submitted via the ONB and resulting notices posted online.
- 2.2 **[SP]** When flags AP over H are displayed from a Race Committee vessel, races not started are *postponed* and those boats shall immediately return ashore and wait there for further signals. When flags N over H are displayed from a Race Committee vessel, all races are *abandoned* and all boats shall immediately return ashore and wait there for further signals. This changes Race Signals AP over H and N over H.

3 **[DP]** CODE OF CONDUCT

- 3.1 Competitors and support persons shall comply with reasonable requests from race officials.
- 3.2 Competitors and Support Persons shall comply with the [Australian Sailing Integrity Policies](#).
- 3.3 Boats shall not sail into other racing areas while other classes/divisions are racing. Boats not racing shall remain clear of boats that are racing and official vessels.

4 SIGNALS MADE ASHORE

- 4.1 Signals made ashore will be displayed at the flag masts at Royal Brighton Yacht Club boat park.
- 4.2 When flag AP is displayed ashore, '1 minute' is replaced with 'not less than 30 minutes' in the race signal AP. This changes race signal AP.
- 4.3 **[SP]** Flag D with one sound means 'Boats shall not leave the harbour until this signal is made'. This adds to Race Signals. The warning signal will not be made before the scheduled time or less than 30 minutes after Flag D is displayed.
- 4.4 Signals made ashore may also be posted on the Official Notice Board.

5 SCHEDULE OF RACES

- 5.1 The total number of races scheduled is as per the Event Schedule NOR Attachment A. One extra race per day may be sailed, provided that no fleet becomes more than one race ahead of schedule.
- 5.2 The daily race schedule and the scheduled time of the warning signal for the first race is shown at Addendum C. The scheduled time of the first warning signal for subsequent days will be promulgated as a Notice to Competitors on the ONB.
- 5.3 The warning signal for each succeeding race will be made as soon as practicable after the completion of the previous race.

- 5.4 To alert boats that a race or sequence of races will begin soon, the orange starting line flag will be displayed with one sound at least five minutes before a warning signal is displayed. This changes RRS Race Signals.

6 CLASS FLAGS

- 6.1 See SI Addendum E

7 RACING AREAS

- 7.1 See SI Addendum D.

8 COURSES

- 8.1 The diagrams in SI Addendum E show the courses, the course designations, the order in which marks are to be passed, and the side on which each mark is to be left.
- 8.2 No later than the warning signal, the Race Committee signal vessel will display the course designation if required and may display the approximate compass bearing of the first leg.
- 8.3 If one of the gates marks is not laid, then the laid mark shall be left to port.

9 MARKS

- 9.1 See SI Addendum E.

10 THE START

- 10.1 Class fleets may be started in any order, and some class fleets may be started together.
- 10.2 The starting line will be between a staff displaying an orange flag on the Race Committee vessel at the starboard end and either:
- a) the course side of the port-end inflatable starting mark, or
 - b) a staff displaying an orange flag on the Race Committee vessel at the port end.
- 10.3 **[DP]** Boats whose warning signal has not been made shall avoid the starting area during the starting sequence for other classes. The starting area is defined as a rectangle 50 meters from the starting line and marks in all directions.
- 10.4 A boat that does not start within 4 minutes after her starting signal, or for Delta course 3 minutes, will be scored Did Not Start without a hearing. This changes RRS 35, Appendix A5.1 and Appendix A5.2.

11 CHANGE OF THE NEXT LEG OF THE COURSE

- 11.1 To change the next leg of the course, the Race Committee will lay a new mark (or move the gate or move the finishing line) and remove the original mark as soon as practicable. When in a subsequent change a new mark is replaced, it will be replaced by an original mark.

12 THE FINISH

- 12.1 The finishing line will be between a staff displaying a blue flag on the Race Committee vessel and either:
- a) the course side of the nearby inflatable finishing mark, or
 - b) a staff displaying a blue flag on the nearby Race Committee vessel.

12.2 **[DP]** Boats finishing shall keep clear of boats about to start where reasonably practicable.

13 TIME LIMITS AND TARGET TIMES

13.1 See SI Addendum E.

13.2 If no boat has passed Mark 1 within the Mark 1 Time Limit, if any, the race will be abandoned.

13.3 The Finishing Window is the time for boats to finish after the first boat sails the course. Boats failing to sail the course within the Finishing Window will be scored Did Not Finish without a hearing, except as provided for in SI A-1 12.3. This changes RRS 35, RRS Appendix A5.1 and A5.2.

13.4 Failure to meet the Target Time will not be grounds for redress. This changes RRS 61.

14 HEARING REQUESTS

14.1 The Organising Authority has appointed an International Jury for this event in accordance with RRS 91. Australian Sailing's approval of this appointment is posted on the ONB. The right of appeal from a protest committee hearing is denied as provided in RRS 70.3.

14.2 Protests shall be submitted via the ONB.

14.3 For each class, the protest time limit is 60 minutes after the last boat has finished the last race of the day or the Race Committee signals no more racing today, whichever is the later.

14.4 Notices will be posted no later than 30 minutes after the protest time limit to inform competitors of hearings in which they are parties. Hearings will be held at RBYC Committee Room beginning at the time posted. Hearings may be scheduled to begin up to 30 minutes before the end of the protest time limit.

14.5 A list of boats that have been penalized under Appendix P for breaking RRS 42 will be posted.

15 SCORING

15.1 Three races are required to be completed to constitute a series.

15.2 When fewer than five races have been completed, a boat's regatta score is the total of her race scores.

15.3 When five to nine races have been completed, a boat's regatta score is the total of her race scores excluding her worst score.

15.4 When ten to twelve races have been completed a boat's regatta score is the total of her race scores excluding her two worst scores.

15.5 Scoring for ILCA 6 and 7 classes is described in Addendum A.2.

15.6 Spare

15.7 Spare

15.8 Scoring for the Australian Para Sailing Championships (2.4mR Class Division), 2.4mR Victorian State Championships and Finn Victorian State Championships will be drawn from the overall fleet results for their respective classes.

16 **[NP]** SAFETY REGULATIONS

16.1 **[SP]** Competitors shall wear personal flotation devices in accordance with NOR 1.2 at all times while afloat, except briefly while changing or adjusting clothing or personal equipment.

16.2 Boats not leaving the harbour for a scheduled race shall promptly use the electronic sign on/off system by selecting "Not Sailing Today".

- 16.3 **[SP]** Before leaving to race on each scheduled racing day, a crew shall sign-on electronically using the online sign on/off system.
- 16.4 **[SP]** After returning to shore on each scheduled racing day, a crew shall sign-off electronically using the online sign on/off system within the protest time limit.
- 16.5 Instructions for use of electronic sign on/off system:
- a) Competitors shall provide a contact mobile phone number on the entry system.
 - b) Competitors will receive a text message prior to the first race containing a link to the sign on system.
 - c) Prior to leaving the shore, competitors shall click on the link, select the "Sign on/off" link in the menu and select either "Sign on" or "Not Sailing Today".
 - d) On returning to shore after racing, competitors shall click on the "Sign Off" link.
 - e) If a competitor is having issues with the sign on/off contact the regatta office who will manually sign you on/off.
- 16.6 **[DP]** A boat that retires from racing shall notify the Race Committee before leaving the racing area, or if that is not possible, shall notify the race office as soon as possible after returning ashore and shall complete a retirement declaration in the online notice board before the expiry of the protest time limit.
- 16.7 **[DP]** Boats shall not sail into other course areas whilst the other course areas are racing. Boats not racing shall remain clear of boats that are racing and official boats.
- 16.8 Race Management VHF Channels – See SI Addendum E.
- 16.9 **[DP]** Race officials and Race Committee vessels may retrieve boat crews and return them to their boats for safety reasons. The sail number of a boat which receives outside help will be notified to the Race Committee with details of the incident and a hearing may be held (if required) to determine any penalty. This changes RRS 41.

17 REPLACEMENT OF CREW OR EQUIPMENT

- 17.1 **[DP]** Substitution of competitors will not be allowed without prior written approval of the Race Committee via the Online Notice Board and shall comply with any restrictions in the Notice of Race.
- 17.2 **[DP]** Substitution of skippers will not be allowed after close of Registration for the applicable class.
- 17.3 **[DP]** Substitution of damaged or lost equipment will not be allowed unless approved by the Race Committee. Requests for substitution shall be made to the Race Committee at the first reasonable opportunity via the Online Notice Board. When equipment is substituted during a series of races on the same day, the request shall be made before the protest time limit expires on the day via the online form.

18 EQUIPMENT AND MEASUREMENT CHECKS

- 18.1 A Technical Committee will be appointed in accordance with RRS 92.
- 18.2 **[DP] [NP]** Equipment may be inspected at any time for compliance with the Class Rules, Notice of Race and Sailing Instructions. When instructed by a member of the Technical Committee, a boat shall proceed immediately to a designated area for inspection.
- 18.3 Penalties for a breach of class rules are at the discretion of the international jury and may be less than disqualification.

19 OFFICIAL VESSELS

19.1 Official vessels will be marked as follows:

PRO	White Flag with PRO
Race Committee	Course designation – A, B, C, D or E
Rescue	White flag with RBYC crest
Judges	White Flag with letter J
Media	White Flag with letter M
Equipment Inspection	Flag with letter M or Measurer

19.2 Actions by official vessels, drones or helicopters shall not be grounds for requesting redress by a boat. This changes RRS 61.1(a).

20 [DP] 2.4mR HAUL OUT RESTRICTIONS

Boats shall not be hauled out during the event except with and according to the terms of prior written permission of the Race Committee.

ADDENDA

- A. Supplementary Sailing Instructions – iQFOiLs, ILCA 6&7 and 2.4mR
- B. Standard Penalties
- C. Schedule of Races
- D. Racing Areas
- E. Courses

Supplementary Sailing Instructions

A-1 iQFOiLs

- 10.5 Races will be started by using the following signals. Times shall be taken from the visual signals - the absence of a sound signal shall be disregarded. This changes RRS B3 26 and F3 26.

Minutes before starting signal	Visual signal	Sound signal	Means
3	<i>Class flag</i>	<i>One</i>	<i>Warning signal</i>
2	<i>U, or black flag</i>	<i>One</i>	<i>Preparatory signal</i>
1	<i>Preparatory flag removed</i>	<i>One long</i>	<i>One minute</i>
0	<i>Class flag removed</i>	<i>One</i>	<i>Starting signal</i>

- 10.6 **[DP]** The Race Committee may signal that boards shall sail on a specific tack during the 10 seconds before and 10 seconds after the starting signal is made, by displaying a green flag for starboard tack or a red flag for port tack, before or with the warning signal.
- 12.3 For Women and Youth only, boats which are still deemed to be racing by the Race Committee but are outside the Finishing Window may be scored an allocated place based on their position when the Time Limit expires. Such boats may be directed to return to the start area or other location without crossing the finish line. Neither the allocation of a finish place nor the failure to allocate a finish place will be grounds for redress. This changes RRS 35, RRS 61.4(b), RRS Appendix A5.1, A5.2 and A10.
- 15.6 When thirteen or more races have been completed a boat's regatta score will be the total of her race scores excluding her three worst scores.
- 15.4 Slalom Racing
- Races will be conducted in two heats;
 - Open Men, and
 - Open Women and Youth and
 - Each slalom race will be scored the same as one course race.
- 16.10 **[NP][DP]** Women and Youth divisions shall display a coloured ribbon, permanently fixed during the day's races and flying from the top of the mast. The ribbons shall be collected from the Regatta Office before the first race.

A-2 ILCA 6 & 7 - Olympic Format Test Event

The event will consist of a three-day Opening series followed by a one-day Final series.

The ILCA 6 and 7 will sail as separate fleets.

Opening Series

9 races are scheduled over 3 days, with 3-4 races a day. The race target time is 30 minutes.

A boat's series score will be the total of her race scores in the Opening series. When from five to nine races have been completed, her series score is the total of her race scores excluding her worst score.

At the end of Opening series, the top 10 ranked boats from each fleet will advance to the Final series. The Opening series scores will be carried over; however, they will be adjusted so that;

- no competitor will have more than a 9 point gap from the boat in front or behind them, and
- no boat from 4th to 10th will have a gap greater than 18 points to 3rd.

Boats which do not qualify for the Finals Series will continue sailing in the Opening series, with no adjustment to scores. Up to 2 races will be conducted on one day.

When more than nine races have been completed, a boat's series score will be the total of her race scores excluding her two worst scores.

All boats continuing in the Opening series will be ranked in order below boats sailing in the Finals series. This changes SI 15.

Finals Series

Appendix MR Umpired Medal Racing Version 2025-01 will apply.

The Final Series will consist of two single point races. The race target time is 20 minutes.

The final event score will be the adjusted score from the Opening series plus the two Finals race scores. Scores from the Finals races shall not be discarded.

If there is a series score tie between two or more boats at the end of the Finals series, the tie will be broken in the order of the scores in the last race. This changes RRS A8.

If no races in the Finals series are sailed, the Opening series results will be considered as final results for the event.

The Start

The Finals series races will be started by using the following signals. This changes RRS B3 26 and F3 26.

Finals series races will be started using the P flag for the first attempt.

Minutes before starting signal	Visual signal displayed	Visual signal removed	Sound Signal	Means
7+	Orange starting line flag		one	Attention signal race will start soon
6	Class flag P or starting penalty if required (U, or Black) Rule 42 (flag O/R if applicable)		No sound	Class to start and applicable rules
5	White flag with the number 5		One	Warning signal
4	Blue flag with the number 4	White flag	One	Preparatory Signal
3	Pink flag with number 3	Blue flag	One	Three minutes
2	Red flag with number 2	Pink flag	One	Two minutes
1	Yellow flag with number 1	Red flag	One long sound	One minute
0	Green flag	Yellow flag	One	Start signal
+1		Green flag and Class Flag, P, U or Black and O/R)	No sound	

A-3 2.4mR

- 9.2 Audio marks may be activated at any time by vision impaired competitors or the race committee. The failure of audio marks or control equipment shall not be grounds for redress.
- 16.10 All competitors shall attend a mandatory safety briefing. The date, time and location of the briefing will be advised at least 24 hours in advance.
- 16.11 **[DP]** To assist safety boat crews in communicating and rendering assistance, 2.4mR sailors shall display the appropriate coloured band on their sails from the following table:
- | | |
|----------|-------|
| Physical | Blue |
| Vision | Red |
| Hearing | Green |

Bands are to be 75mm wide and positioned as shown in the diagram



Addendum B

Standard Penalties

The Race Committee may apply a standard penalty without a hearing, or a discretionary penalty may be applied by the International Jury with a hearing.

The Race Committee may protest a boat if it considers a standard penalty is inappropriate.

SI	SAFETY	
2.2	Not returning to shore when flags AP/H or N/H are displayed from a race committee vessel	One point scoring penalty added to the previous race of the day, or the next race if no race has been completed
4.3	Leaving the harbour before Flag D is displayed	One point scoring penalty added to the first race of the day
16.1	Not wearing a personal flotation device in accordance with NOR 1.2	One point scoring penalty added to all races in which the infringement occurs
16.3	Not signing on	One point scoring penalty added to the first race of the day
16.5	Not signing off	One point scoring penalty added to the last race of the day

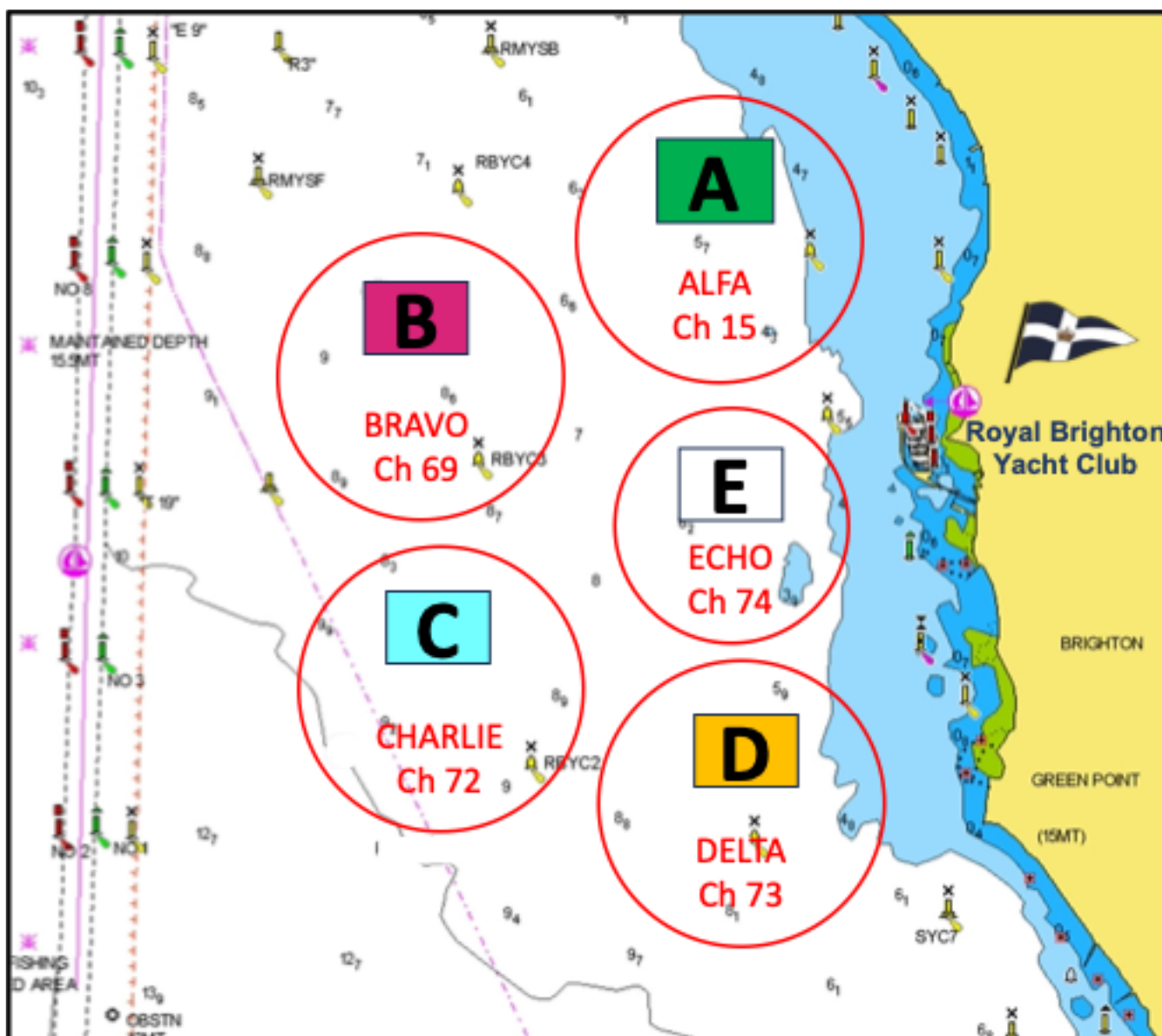
Addendum C

SCHEDULE OF RACES

CLASS			Thu 27 Nov	Fri 28 Nov	Sat 29 Nov	Sun 30 Nov
International Cadets	ALPHA RYCV/RMYS	Races Warning			Up to 3 races 1300	Up to 3 races
Tasar		Races Warning			Up to 3 races 1300	Up to 3 races
Opti - Open		Races Warning			Up to 3 races 1300	Up to 3 races
Opti - Inter		Races Warning			Up to 3 races 1300	Up to 3 races
420		Races Warning			Up to 3 races 1300	Up to 3 races
ILCA 7 ILCA 6	BRAVO RBYC	Races Warning	Up to 4 races 1300	Opening Series Up to 4 races	Up to 4 races	Finals Up to 2 races
ILCA 4		Races Warning	Up to 3 races 1300	Up to 3 races	Up to 3 races	Up to 2 races
Finn		Races Warning			Up to 3 races 1300	Up to 2 races
49er/FX	CHARLIE MSC	Races Warning	Up to 3 races 1300	Up to 3 races	Up to 3 races	Up to 3 races
Nacra 17		Races Warning	Up to 3 races 1300	Up to 3 races	Up to 3 races	Up to 3 races
470		Races Warning	Up to 3 races 1300	Up to 3 races	Up to 3 races	Up to 3 races
29er		Races Warning			Up to 3 races 1300	Up to 3 races
RS100		Races Warning			Up to 3 races 1300	Up to 3 races
iQFOIL	DELTA BRYC	Races Warning	Up to 5 races 1330	Up to 5 races	Up to 5 races	Up to 5 races
2.4mR	ECHO RBYC	Races Warning		Up to 3 races 1300	Up to 3 races	Up to 3 races

Times of the first warning signal on subsequent days will be promulgated by a Notice to Competitors on the ONB by 2000 on the day before it will take effect.

RACING AREAS



ALFA Course – VHF 15

Classes

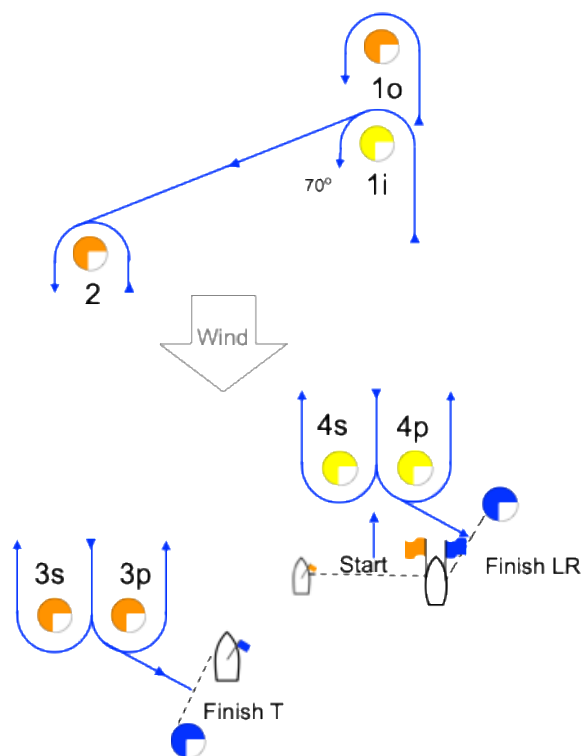
Class	Class Insignia	B'ground Colour	Finish Time Limit	Mark 1 Time Limit	Finish Window	Target Time
ALL CLASSES	A					
Tasar	Red	White	60	15	15	45
Optimist - Open	Blue	White	55	20	15	35
Optimist - Intermediate	White	Blue	50	20	15	30
International Cadets	Black	White	60	25	15	45
420	Blue	White	75	25	15	40

Description of Marks

Start pin	Race vessel or orange buoy
Finish pins	Blue buoy
Mark 1i	Yellow buoy
Mark 1o	Orange buoy
Mark 2	Orange buoy
Mark 3p/3s	Orange buoy
Mark 4p/4s	Yellow buoy

Courses

Class		Mark Rounding Order
Tasar	LR2	Start – 1o – 4s/4p – 1o – 4p – Finish LR
	O2	Start – 1i – 2 – 3s/3p – 2 – 3p – Finish T
Optimist - Open		Start – 1i – 2 – 3s/3p – 2 – 3p – Finish T
Optimist - Intermediate		Start – 1i – 2 – 3p – Finish T
International Cadet	LR2	Start – 1o – 4s/4p – 1o – 4p – Finish LR
	O2	Start – 1i – 2 – 3s/3p – 2 – 3p – Finish T
420	LR2	Start – 1o – 4s/4p – 1o – 4p – Finish LR
	O2	Start – 1i – 2 – 3s/3p – 2 – 3p – Finish T



BRAVO Course – VHF 69

Classes

Class	Class Insignia	B'ground Colour	Finish Time Limit	Mark 1 Time Limit	Finish Window	Target Time
ALL CLASSES	B					
ILCA 7	Red	White	45	15	15	30
ILCA 6	Red	Green	45	15	15	30
ILCA 4	Red	Yellow	45	15	15	30
Finn	Blue	White	60	25	10	45

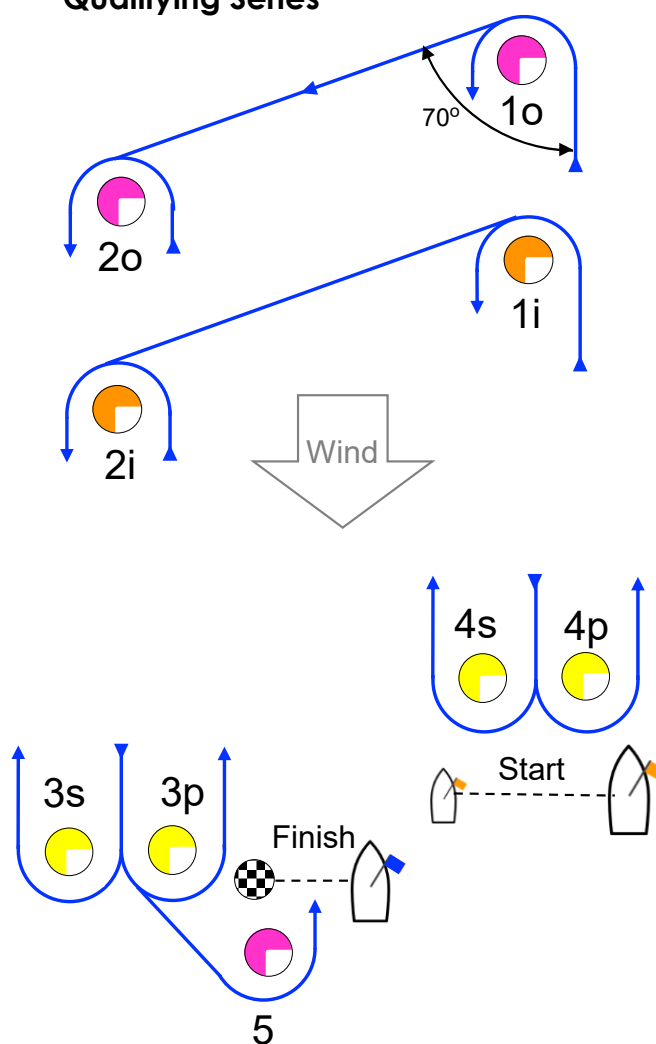
Description of Marks

Start pin	Orange buoy or Race Vessel
Finish pin	B&W Check Buoy
Mark 1i	Orange Buoy
Mark 1o	Pink Buoy
Mark 2i	Orange Buoy
Mark 2o	Pink Buoy
Marks 3p/3s	Yellow Buoy
Marks 4p/4s	Yellow Buoy
Mark 5	Pink Buoy

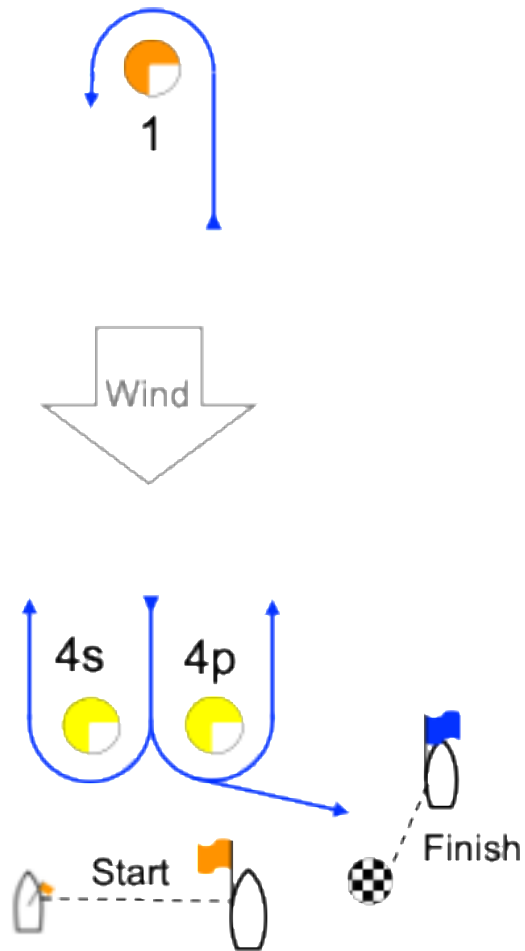
Courses

Class		Mark Rounding Order
ILCA 4	I2	Start – 1i – 4p/4s – 1i – 2i – 3p – 5 – Finish
	O2	Start – 1i – 2i – 3p/3s – 2i – 3p – 5 – Finish
ILCA 6	I2	Start – 1o – 4p/4s – 1o – 2o – 3p – 5 – Finish
	O2	Start – 1o – 2o – 3p/3s – 2o – 3p – 5 – Finish
	LR2	Start – 1 – 4p/4s – 1 – 4p – Finish
ILCA 7	I2	Start – 1o – 4p/4s – 1o – 2o – 3p – 5 – Finish
	O2	Start – 1o – 2o – 3p/3s – 2o – 3p – 5 – Finish
	LR2	Start – 1 – 4p/4s – 1 – 4p – Finish
Finn	I2	Start – 1o – 4p/4s – 1o – 2o – 3p – 5 – Finish
	I3	Start – 1o – 4p/4s – 1o – 4p/4s – 1o – 2o – 3p – 5 – Finish
	O2	Start – 1o – 2o – 3p/3s – 2o – 3p – 5 – Finish
	O3	Start – 1o – 2o – 3p/3s – 2o – 3p/3s – 2o – 3p – 5 – Finish

Qualifying Series



Finals Series



CHARLIE Course – VHF 72

Classes

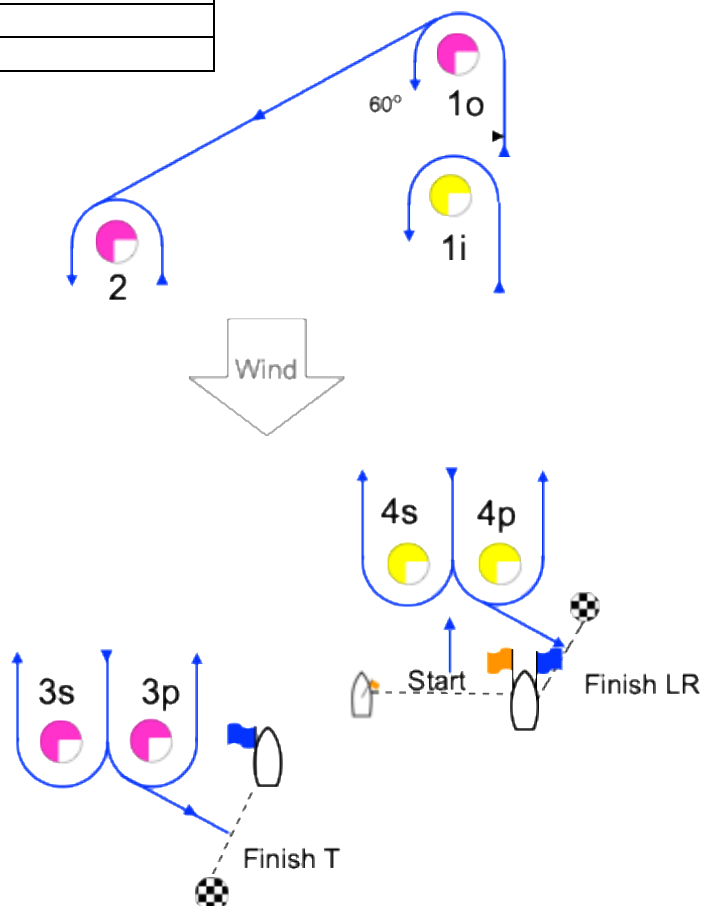
Class	Class Insignia	B'ground Colour	Finish Time Limit	Mark 1 Time Limit	Finish Window	Target Time
ALL CLASSES	C					
49^{er}	Red	White	50	20	10	30
49^{er} FX	Blue	Yellow	50	20	10	30
Nacra 17	Blue	White	50	20	10	30
470	Black	White	60	25	15	40
29^{er}	Red	White	50	20	10	30
RS100	Black/Pink	White	60	15	15	40

Description of Marks

		New Marks
Start pin	Race vessel	
Finish pins	B&W check buoy	
Mark 1i	Yellow Buoy	Orange buoy
Mark 1o	Pink Buoy	Red buoy
Mark 2	Pink Buoy	
Mark 3p/3s	Pink Buoy	
Mark 4p/4s	Yellow Buoy	

Courses

Class	Mark Rounding Order
49 ^{er} /FX	Start – 1o – 4s/4p – 1o – 4p – Finish LR
Nacra 17	Start – 1o – 4s/4p – 1o – 4p – Finish LR
29 ^{er}	Start – 1i – 4s/4p – 1i – 4p – Finish LR
470	Start – 1o – 2 – 3s/3p – 2 – 3p – Finish T
RS100	Start – 1o – 2 – 3s/3p – 2 – 3p – Finish T



DELTA Course – VHF 73

Classes

Class	Class Insignia	B'ground Colour	Finish Time Limit	Mark 1 Time Limit	Finish Window	Target Time
ALL CLASSES	D					
iQFOIL Men	White	Red				
iQFOIL Women	Red	White				
iQFOIL Youth / Junior	White	Blue				
	Course Racing		23		6	16
	Sprint Slalom		7		4	4-5

Description of Marks

Windward/Leeward

Start pin	Orange buoy or RCV
Finish pin	Black & White buoy
Mark 1	Pink Buoy
Mark 1i	Yellow Buoy
Marks 4P & 4S	Yellow Buoy

Signal	Mark Rounding Order
LR2*	Start – 1 – 4s/4p – 1 – 4p – Finish
LR3*	Start – 1 – 4s/4p – 1 – 4s/4p – 1 – 4p – Finish

*** iQFOIL Women, Youth and Junior to round Mark 1i, NOT 1**

Trapezoid

Start pin	Orange buoy or RCV
Finish pin	Black & White buoy
Mark 1	Orange Buoy
Mark 2	Orange Buoy
Marks 3p & 3s	Yellow Buoy
Marks 4p & 4s	Yellow Buoy

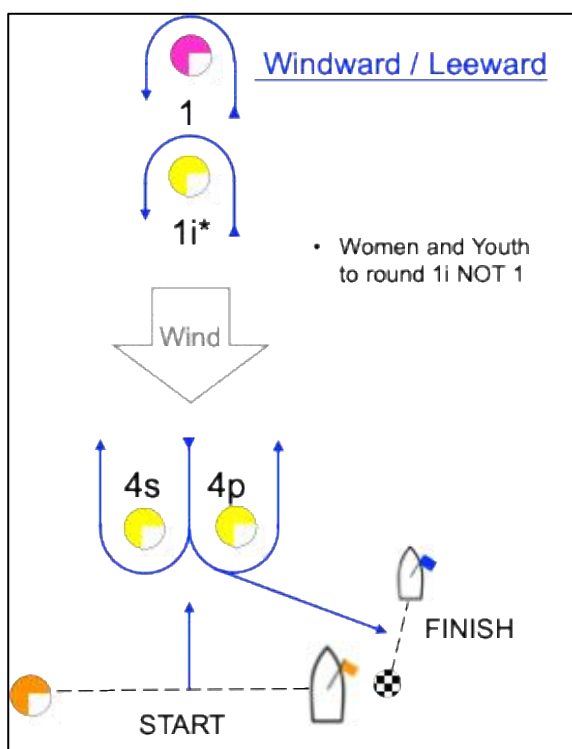
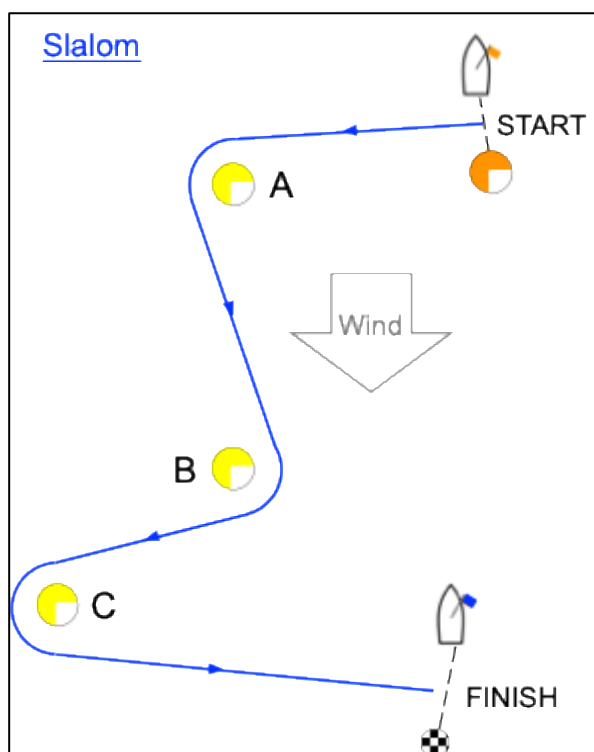
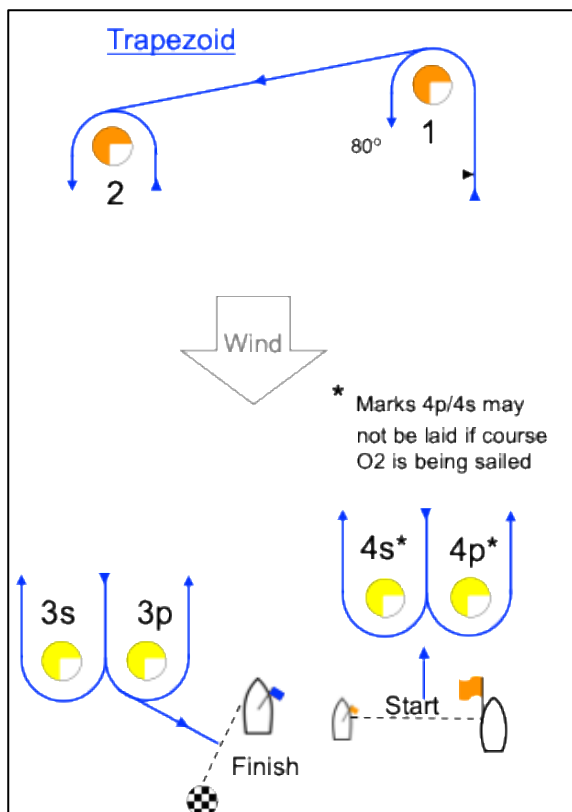
Signal	Mark Rounding Order
I2	Start – 1 – 4s/4p – 1 – 2 – 3p – Finish
O2	Start – 1 – 2 – 3s/3p – 2 – 3p – Finish

*** Marks 4p/4s may not be laid if course O2 is being sailed**

Slalom

Start pin	Orange buoy
Finish Pin	Black & White buoy
Marks A, B & C	Yellow Buoy

Signal	Mark Rounding Order
S4	Start – A – B – C – Finish



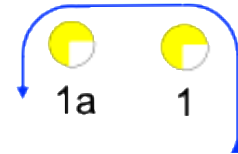
ECHO Course – VHF 74

Classes

Class	Class Insignia	B'ground Colour	Finish Time Limit	Mark 1 Time Limit	Finish Window	Target Time
2.4mR	Black	Yellow	60	25	15	40

Description of Marks

Start pin	Race vessel or orange buoy
Finish pin	Black & White check buoy
Mark 1, 1a	Yellow buoy
Mark 4p, 4s	Orange buoy



Course

Signal	Mark Rounding Order
p1	Start – 1 – 1a – Pin – Finish
p2	Start – 1 – 1a – 4p/4s – 1 – 1a – Pin – Finish
p3	Start – 1 – 1a – 4p/4s – 1 – 1a – 4p/4s – 1 – 1a – Pin – Finish

